

Case: Municipality of Prato

<http://www.comune.prato.it/>



Description

The City of Prato (around 200.000 inhabitants) is famous worldwide for its textile district, which represents about 3% of European textile production. The recycling techniques of textiles led to consider Prato one of the most advanced and innovative industrial city in Italy. Moreover Prato:

- was the first industrial district arranging a close water cycle so to be able to reuse the waste water more than one time and to clean it before giving back to the environment;
- limited the waste produced from the construction and demolition of buildings where many materials are recyclable or reusable.

Takeaways & challenges

- 1 Create a strong governance model with all the actors at local, national and European level for the creation of "*Prato circular City*";
- 2 Make a mapping of all existing initiatives in cities concerning the circular economy;
- 3 Create an urban reuse agency for the management of abandoned or semi-used spaces and buildings of the city, even in a key of collaborative economy.

Actions and cooperations initiated by the city

REORGANISE YOUR LOCAL AUTHORITY

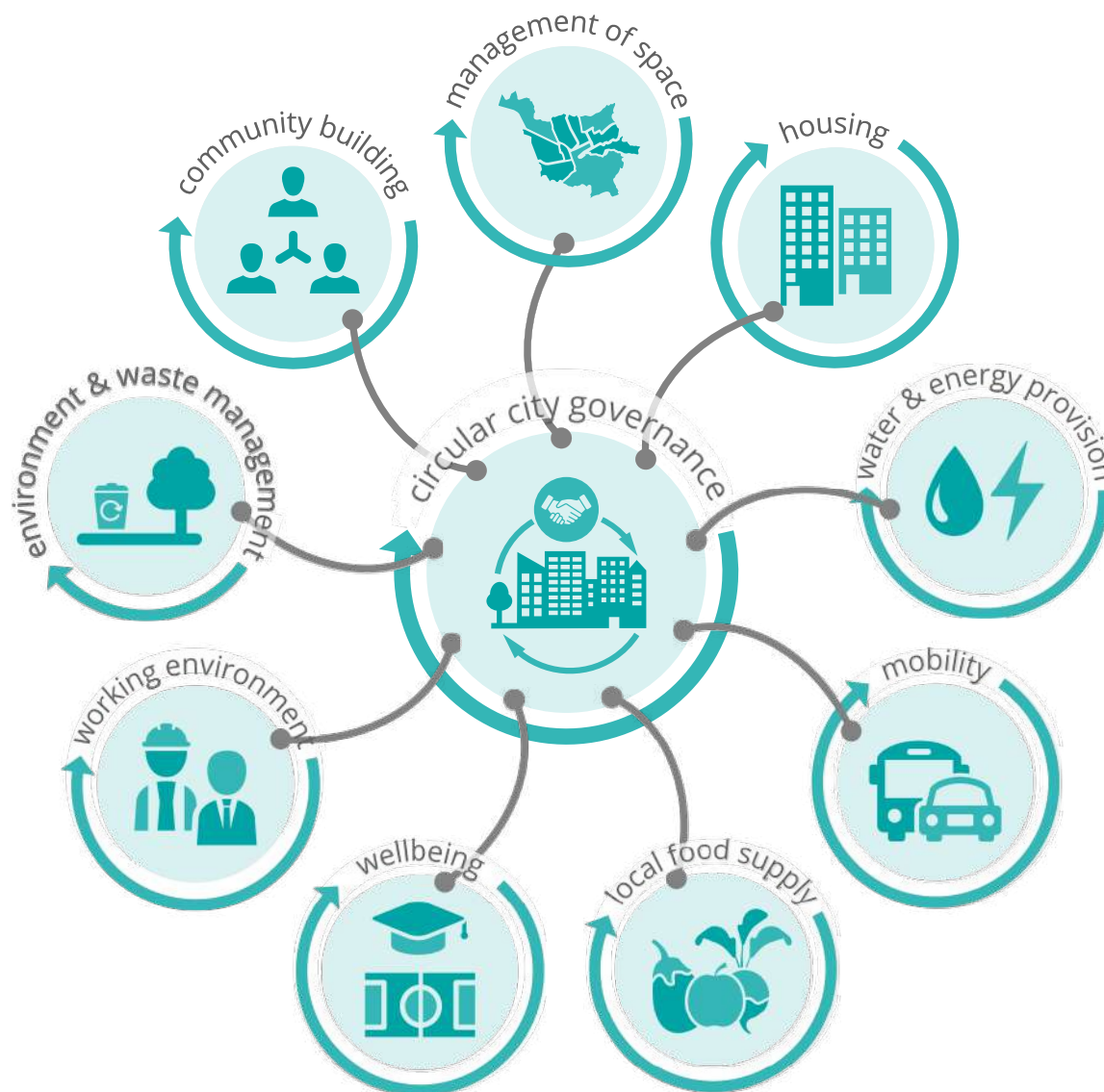
- 1 Create common long term ambition - with the setting of an international portal of the Prato Circular City initiatives;
- 2 Set up cooperation between city departments - with a monitoring cabin on circular economy which involves the relevant stakeholders;
- 3 Act circular
- 4 Get insights in your resources - feasibility study on urban waste flows (by typology) with analysis of their possible re-use

STIMULATE CITIZENS INITIATIVES

- 5 Promote sharing & functional economy
- 6 Raise awareness and coach citizens - coaching developed by PIN university during thematic workshops on new fundraising on circular economy dedicated to ONGs and citizens;
- 7 Support bottom up initiatives - collecting ideas from citizens and SMEs of Prato during the Reco' festival (the first festival on circular economy of the city),.

STIMULATE ENTREPRENEURS & INNOVATION

- 8 Stimulate local symbioses - local authority and university are involved in promoting new startups on circular economy.
- 9 Create incentives to attract circular business
- 10 Communicate success stories - with a dedicated city portal and during the main city events.



GENERAL AND TECHNICAL NUTRIENTS



BIOLOGICAL NUTRIENTS

